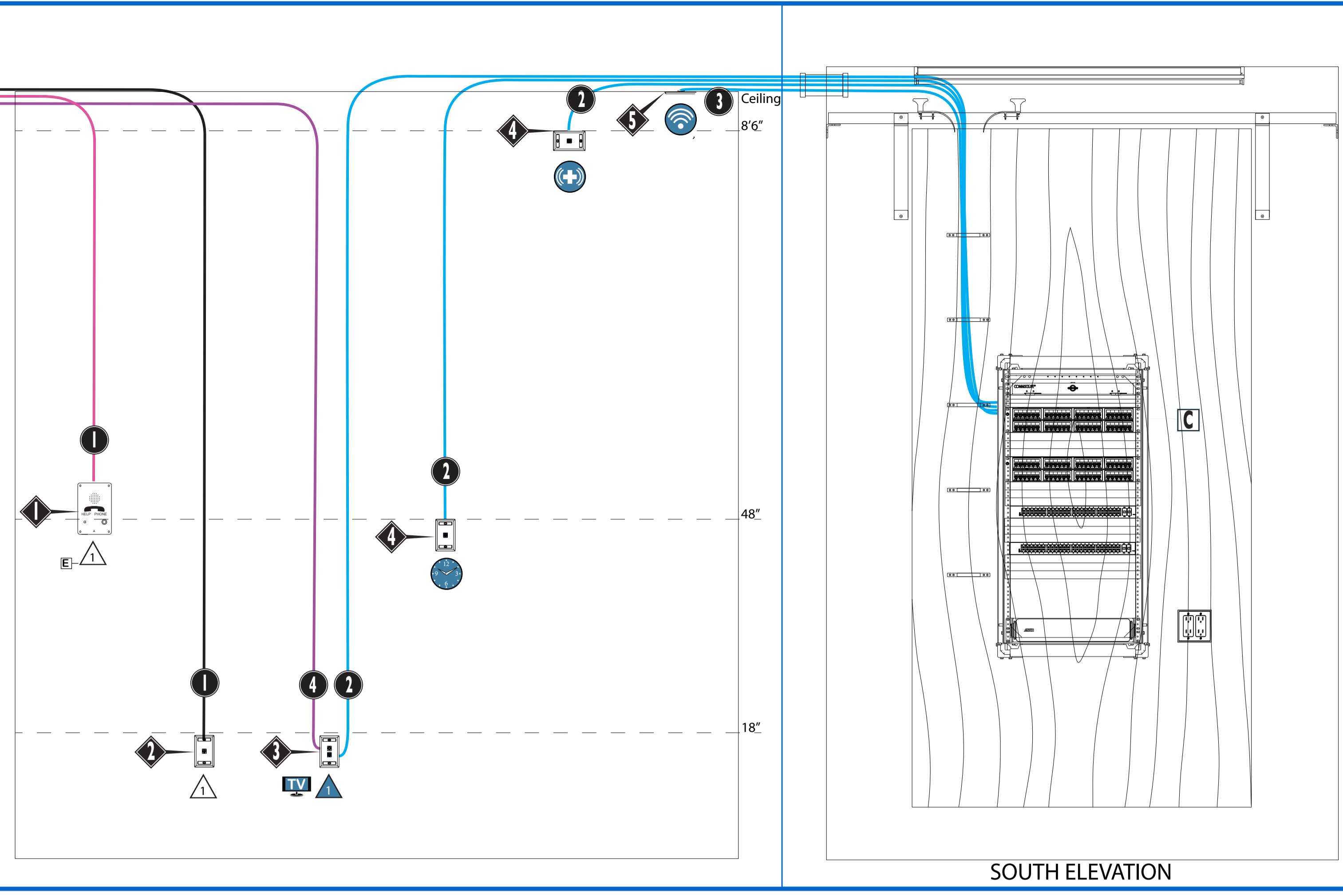
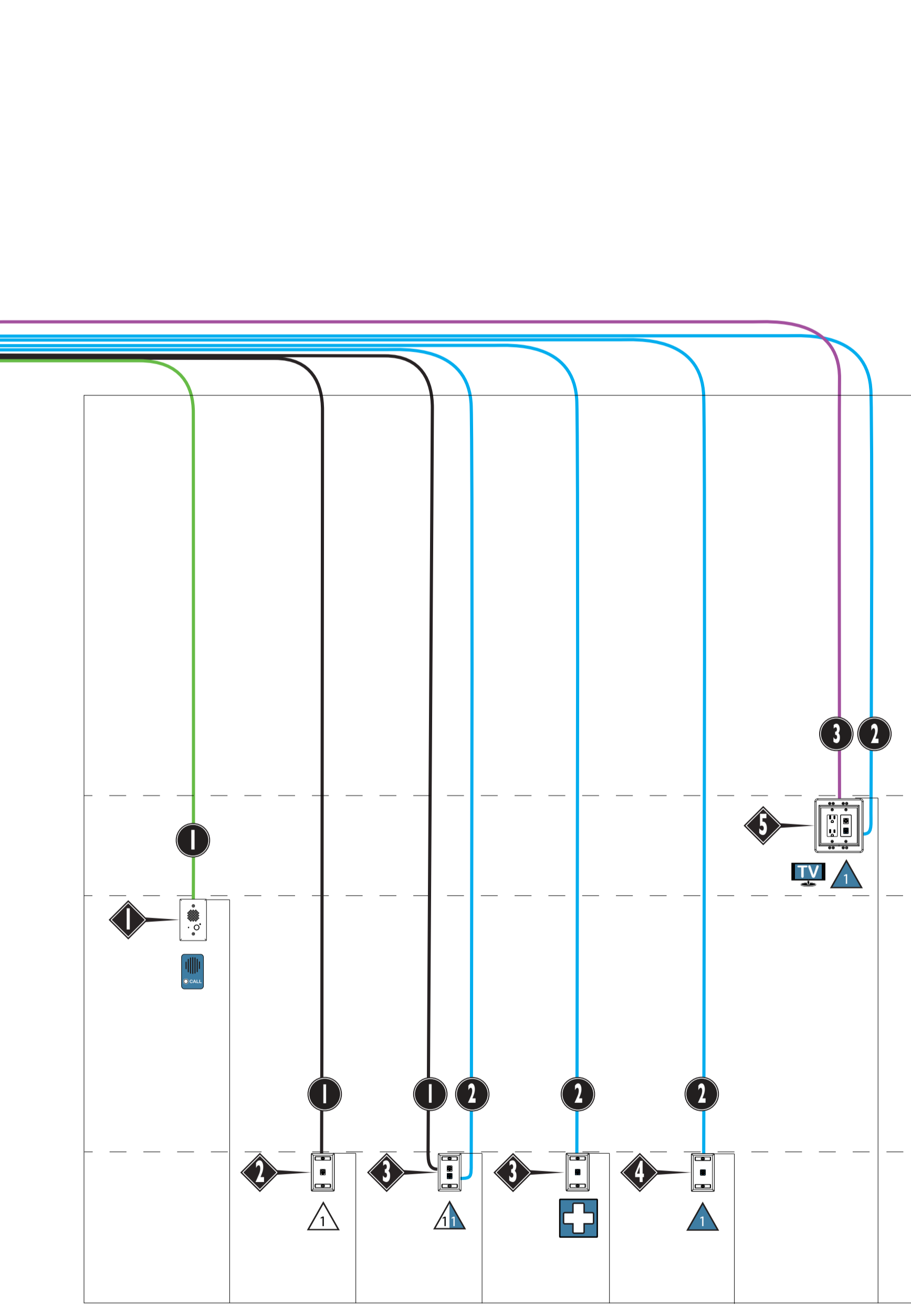
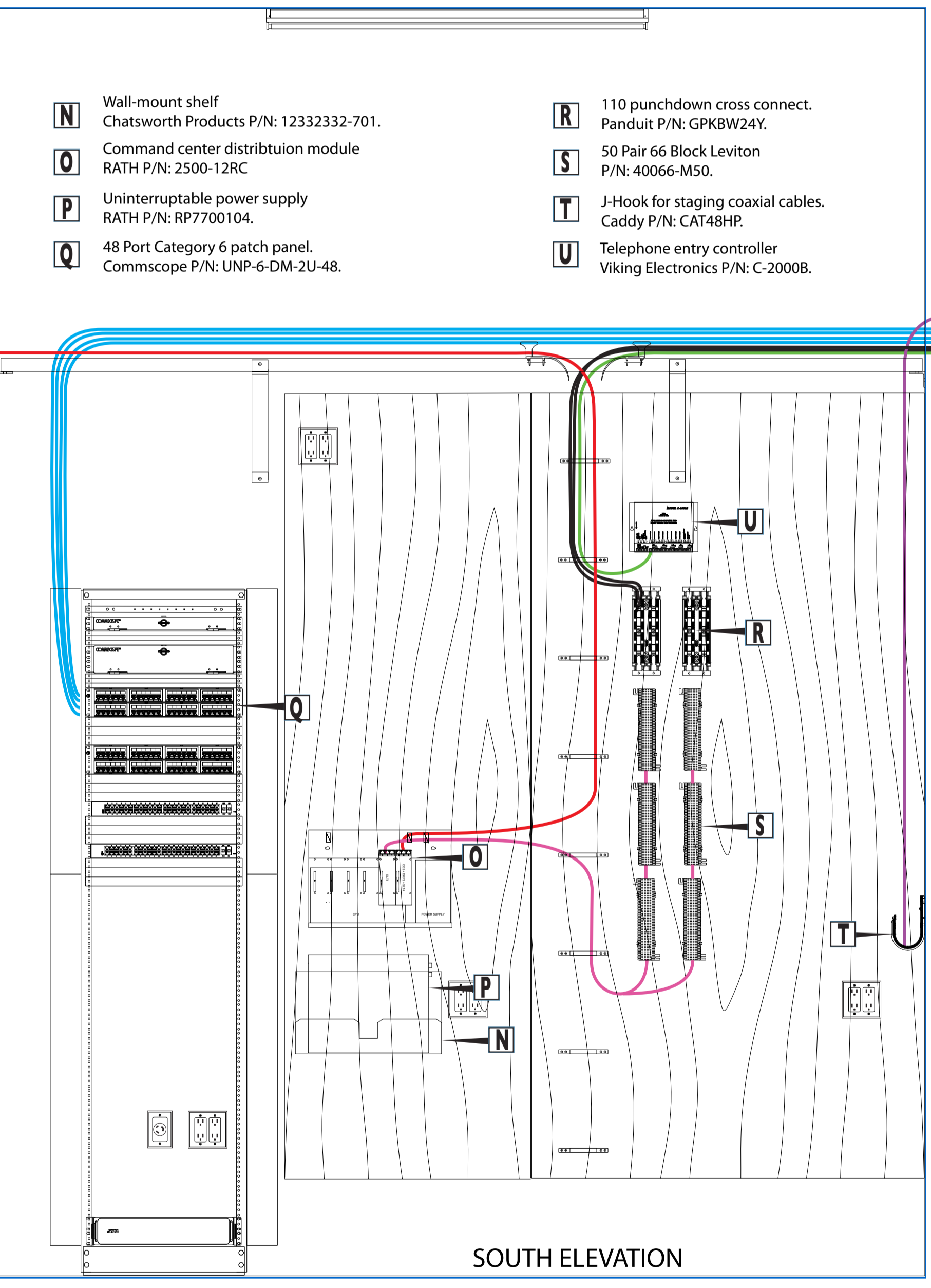
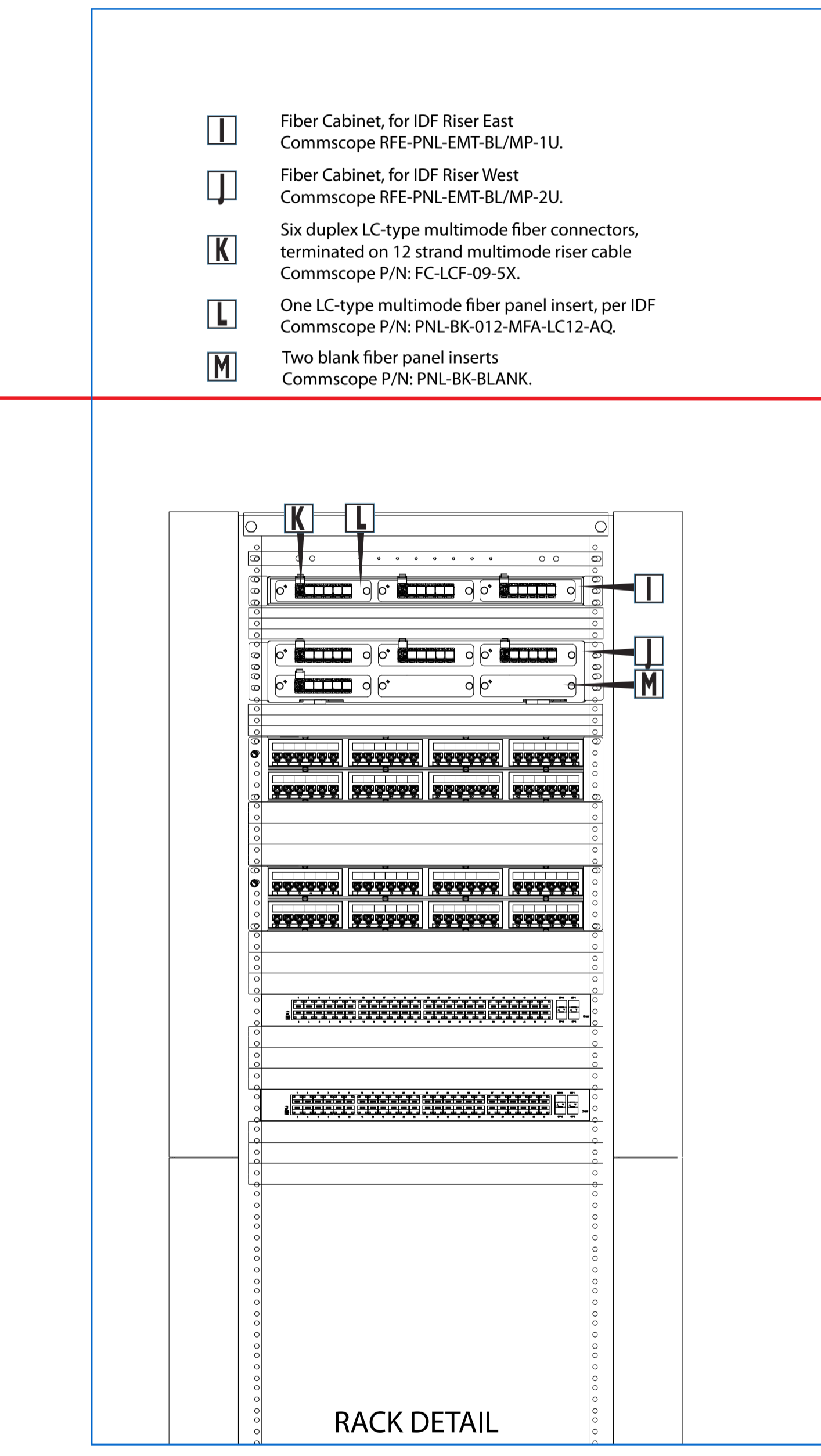
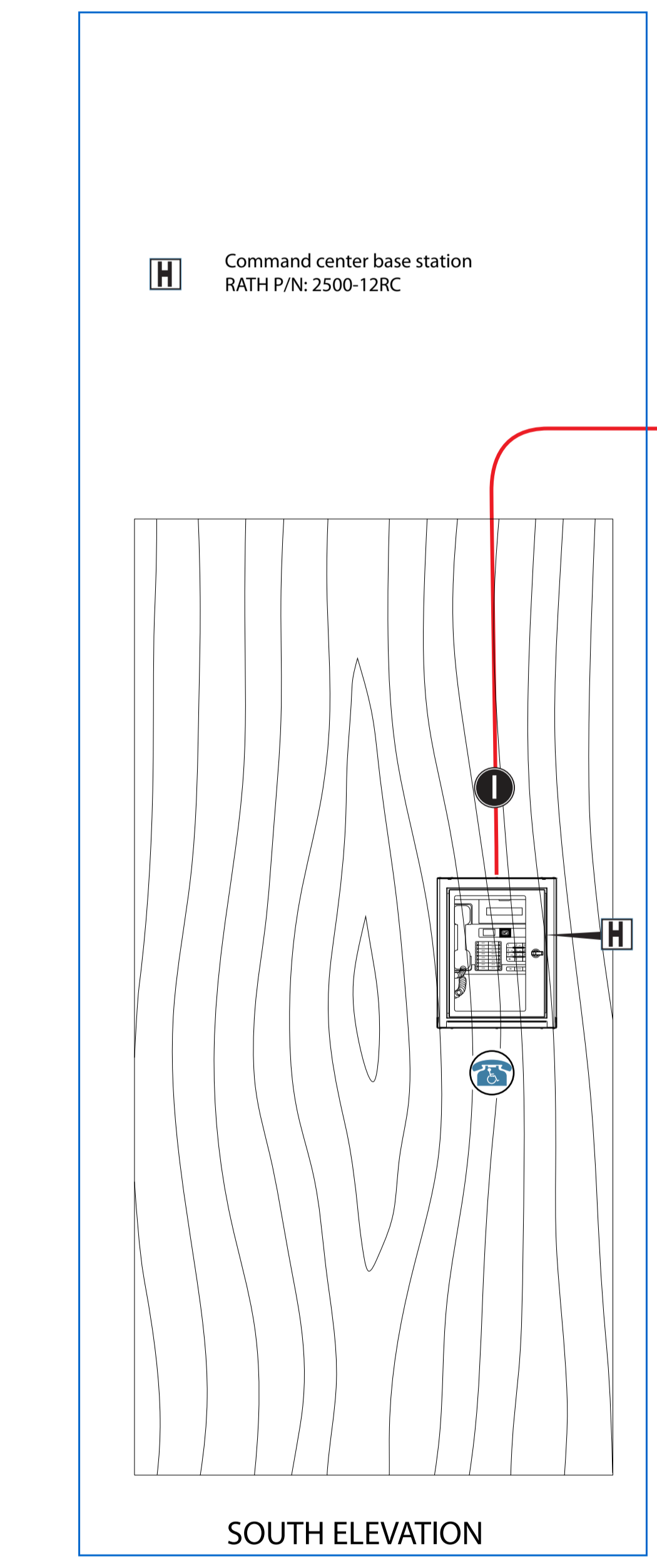
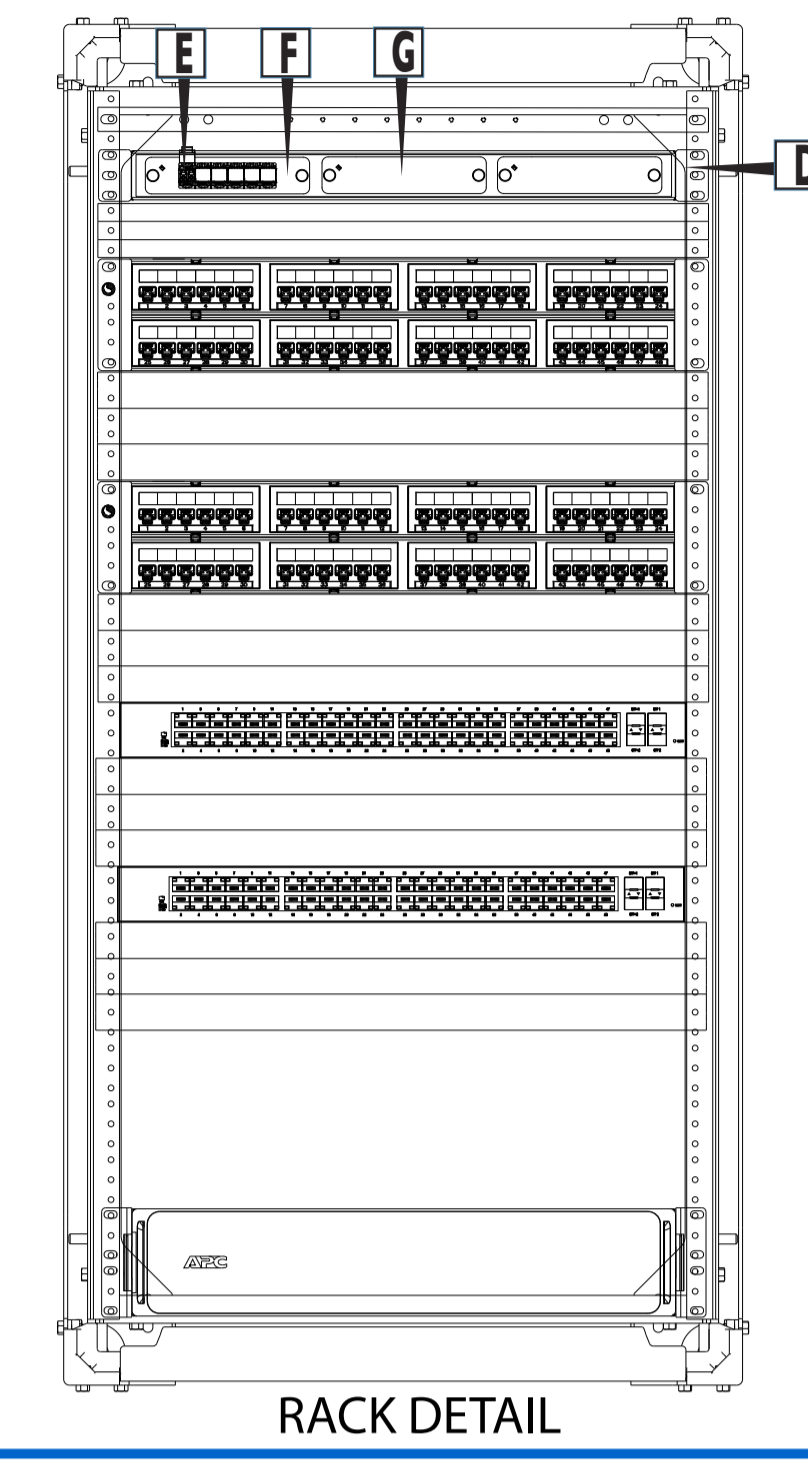


- A** 110 punchdown cross connect.
Panduit P/N: GPKBW24Y.
- B** J-Hook for staging coaxial cables.
Caddy P/N: CAT48HP.
- C** 48 Port Category 6 patch panel.
Commscope P/N: UNP-6-DM-2U-48.
- Emergency phone**
RATH P/N: 2400-805SP.
- 1** One white 1 port keystone plate with label fields.
Panduit P/N: NK1FWHY
- 2** One white Cat6 keystone insert
Panduit P/N: NK688MAW.
- 3** One white 2 port keystone plate with label fields.
Panduit P/N: NK1FWHY
- 4** One blue Cat6 keystone insert
Panduit P/N: NK688MBU.
- 5** One white F-type keystone insert
Panduit P/N: NKFWH.
- 1** One white 1 port keystone plate with label fields.
Panduit P/N: NK1FWHY.
- 2** One blue Cat6 keystone insert
Panduit P/N: NK688MBU.
- 3** One white 2 port keystone plate with label fields.
Panduit P/N: NK1FWHY.
- 4** One blue Cat6 keystone insert
Panduit P/N: NK688MBU.
- 5** One white 2 port keystone plate with label fields.
Panduit P/N: NK1FWHY.
- 1** One white plenum-rated Category 6 UTP cable
Commscope P/N: UN874019914/10.
- 2** One blue plenum-rated Category 6 UTP cable
Commscope P/N: UN874049914/10.
- 3** One blue plenum-rated Category 6 UTP cable
Commscope P/N: UN874049914/10.
- 4** One white plenum-rated Series 6 cable
Commscope P/N: 4112704/10.



- D** Fiber Cabinet.
Commscope RFE-PNL-EMT-BL/MP-1U.
- E** Six duplex LC-type multimode fiber connectors, terminated on 12 strand riser cable.
Commscope P/N: FC-LCF-09-5X.
- F** One LC-type multimode fiber panel insert
Commscope P/N: PNL-BK-012-MFA-LC12-AQ.
- G** Two blank fiber panel inserts
Commscope P/N: PNL-BK-BLANK.



- Telephone entry call station**
Viking Electronics P/N: E-40-WH-EWP
- 1** One white 1 port keystone plate with label fields
Panduit P/N: NK1FWHY.
- 2** One white Cat6 keystone insert
Panduit P/N: NK688MAW.
- 3** One white 2 port keystone plate with label fields
Panduit P/N: NK2FWHY.
- 4** One white Cat6 keystone insert
Panduit P/N: NK688MAW.
- 5** One blue Cat6 keystone insert
Panduit P/N: NK688MBU.
- 1** One white 1 port keystone plate with label fields
Panduit P/N: NK1FWHY.
- 2** One blue Cat6 keystone insert
Panduit P/N: NK688MBU.
- 3** One white 2-gang recessed box
Arlington P/N: TVB5505.
- 4** One white 2 port keystone plate with labels
Panduit P/N: NK2RWFH.
- 5** One white Cat6 keystone insert
Panduit P/N: NK688MAW.
- 1** One blue Cat6 keystone insert
Panduit P/N: NK688MBU.
- 1** One white plenum-rated Category 6 UTP cable
Commscope P/N: UN874019914/10.
- 2** One blue plenum-rated Category 6 UTP cable
Commscope P/N: UN874049914/10.
- 3** One white plenum-rated Series 6 cable
Commscope P/N: 4112704/10.

- H** Command center base station
RATH P/N: 2500-12RC
- I** Fiber Cabinet, for IDF Riser East
Commscope RFE-PNL-EMT-BL/MP-1U.
- J** Fiber Cabinet, for IDF Riser West
Commscope RFE-PNL-EMT-BL/MP-2U.
- K** Six duplex LC-type multimode fiber connectors, terminated on 12 strand multimode riser cable
Commscope P/N: FC-LCF-09-5X.
- L** One LC-type multimode fiber panel insert, per IDF
Commscope P/N: PNL-BK-012-MFA-LC12-AQ.
- M** Two blank fiber panel inserts
Commscope P/N: PNL-BK-BLANK.
- N** Wall-mount shelf
Chatsworth Products P/N: 12332332-701.
- O** Command center distribution module
RATH P/N: 2500-12RC
- P** Uninterruptable power supply
RATH P/N: RP7700104.
- Q** 48 Port Category 6 patch panel.
Commscope P/N: UNP-6-DM-2U-48.
- R** 110 punchdown cross connect.
Panduit P/N: GPKBW24Y.
- S** 50 Pair 66 Block Leviton
P/N: 40066-M50.
- T** J-Hook for staging coaxial cables.
Caddy P/N: CAT48HP.
- U** Telephone entry controller
Viking Electronics P/N: C-2000B.

Royal Palm Assisted Living Facility
375 East Royal Palm Road Boca Raton, Florida 33432
Royal Palm Rd. Assoc. Ltd.
1515 North Federal Hwy, STE 302 Boca Raton, Florida

PERMIT SET
REVISIONS



ENCODERS INC.
Engineered Networks for Commercial Operations and Designed Environments for Residential Spaces

Lighting Control Automation Security Access Control
HVAC Control Audio/Video CCTV Data Comm

850 NW Federal Highway, Suite 401, Stuart FL 34994
7050 West Palmetto Park Rd, Unit 15-171, Boca Raton FL 33433
(772) 446-3005
(772) 446-3007
www.encoders.us.com

CLIENT: Royal Palm Associates Limited
1515 N. Federal Highway Suite 302 Boca Raton, FL
PROJECT: Watercrest
Royal Palm Assisted Living Facility
375 East Royal Palm Rd. Boca Raton, FL
DRAWING TITLE: Div 27: Phone, Data, Video Distribution

any questions please contact: design@encoders.us.com

Symbol	Description	Type
	Satellite Dish	
	Telco Demarc	
	Cable Demarc	
	Phone Outlet X = Quantity of phone cables.	- Emergency Phone
	Data Outlet Y = Quantity of data cables.	
	Phone and Data Outlet X = Quantity of phone cables. Y = Quantity of data cables.	
	Video Outlet	

Symbol	Description	Type
	Taps	
	Phone Call Station	
	Time Clock	
	WiFi Access Point	- Indoor - Outdoor (Weatherproof)
	Cell Repeater	
	Antenna	
	Weatherhead	

Symbol	Description	Type
	Emergency Phone Dialer	
	Nurse Call Station	Battery Operated WiFi device.
	Nurse Call Annunciator	
	Nurse Call Monitor	
	Ground	
	110 V power	

Device Location/Orientation	
	Above Counter
	Below Ceiling
	Ceiling
	Door
	Elevator
	Floor
	Ground
	Interface
	Millwork
	Pedestal
	Soft
	Wall

Station Cable Routing~7th Floor

Phone and video: IDF 6W / Room # 7-54
Data: IDF 7W / Room # 7-53

Station Cable Routing~8th Floor

Phone and video: IDF 8W / Room # 8-54
Data: IDF 9W / Room # 9-54

Station Cable Routing~9th Floor

Phone and video: IDF 8W / Room # 8-54
Data: IDF 9W / Room # 9-54

Station Cable Routing~7th Floor

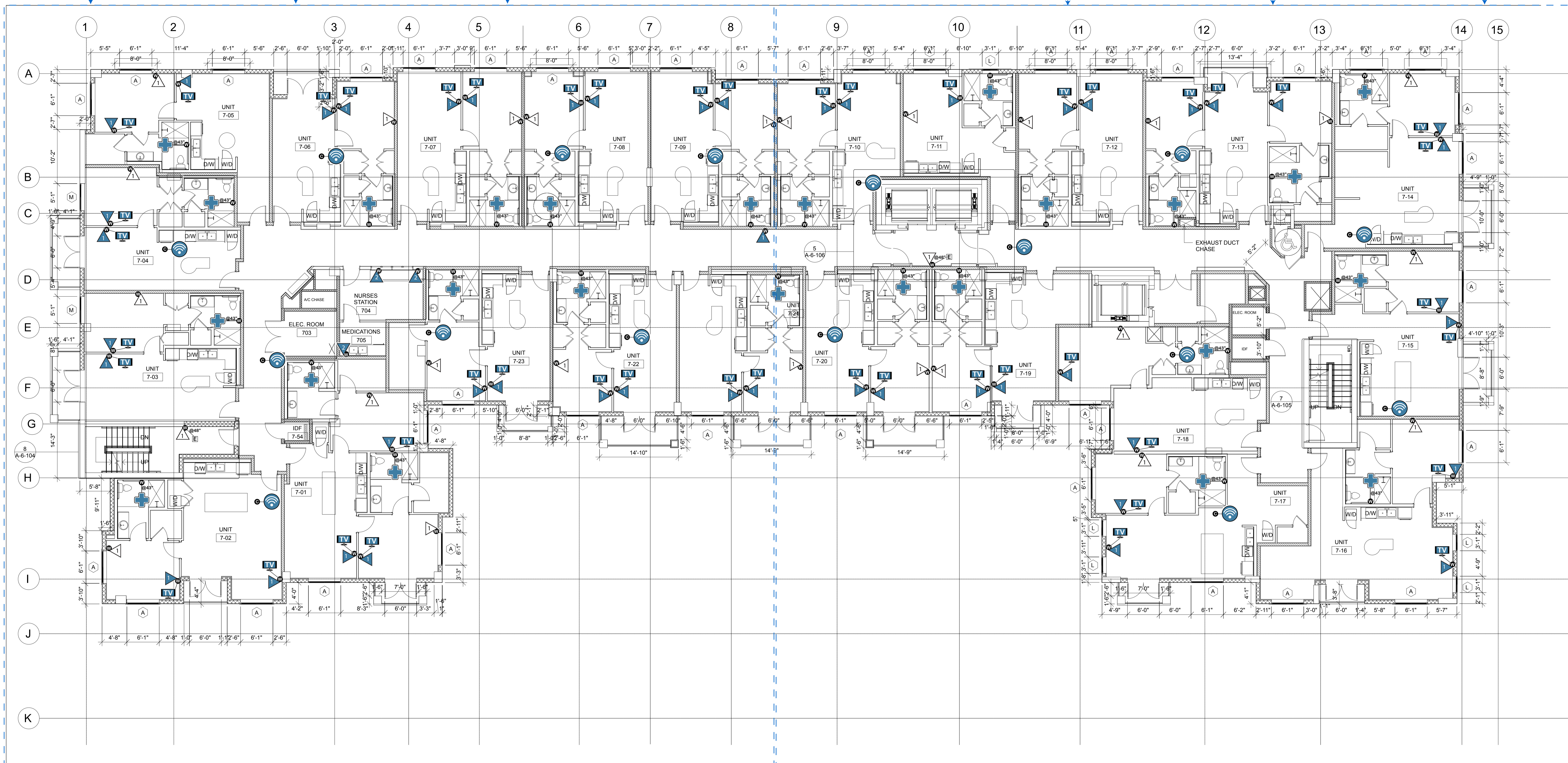
Phone and video: IDF 7E / Room # 7-50
Data: IDF 6E / Room # 7-49

Station Cable Routing~8th Floor

Phone and video: IDF 9E / Room # 9-50
Data: IDF 8E / Room # 8-50

Station Cable Routing~9th Floor

Phone and video: IDF 9E / Room # 9-50
Data: IDF 8E / Room # 8-50



NORTH

1 7TH-9TH (TYPICAL) FLOOR PLAN
A-2-107 1/8" = 1'-0"
ISSUE DATE: 01/02/2020

Royal Palm Assisted Living Facility

375 East Royal Palm Road
Boca Raton, Florida 33432

Royal Palm Rd. Assoc. Ltd.
1515 North Federal Hwy, STE 302
Boca Raton, Florida

PERMIT SET
REVISIONS



7TH thro' 9TH FLOOR PLAN

SHEET TITLE
DATE: 04/22/2020
DRAWN BY: C.S.
REVIEWED BY: P.W.S.
PROJECT NUMBER: 1754

PERMIT SET
SHEET: T-7-9-010

ENCODERS INC.
Engineered Networks for Commercial Operations and Designed Environments for Residential Spaces

Lighting Control Automation Security Access Control
HVAC Control Audio/Video CCTV Data Comm

850 NW Federal Highway, Suite 401, Stuart FL 34994
7050 West Palmetto Park Rd, Unit 15-171, Boca Raton FL 33433
(772) 446-3005
(772) 446-3007
www.encoders.us.com

CLIENT: Royal Palm Associates Limited
1515 N. Federal Highway Suite 302
Boca Raton, FL

PROJECT: Watercrest
Royal Palm Assisted Living Facility
375 East Royal Palm Rd.
Boca Raton, FL

DRAWING TITLE:
Div 27: Phone, Data, Video 7th-9th Floor

any questions please contact: design@encoders.us.com

Symbol	Description	Type
	Satellite Dish	
	Telco Demarc	
	Cable Demarc	
	Phone Outlet X = Quantity of phone cables.	☒ Emergency Phone
	Data Outlet Y = Quantity of data cables.	
	Phone and Data Outlet X = Quantity of phone cables. Y = Quantity of data cables.	
	Video Outlet	

Symbol	Description	Type
	Taps	
	Phone Call Station	
	Time Clock	
	WiFi Access Point	☒ Indoor ☒ Outdoor (Weatherproof)
	Cell Repeater	
	Antenna	
	Weatherhead	

Symbol	Description	Type
	Emergency Phone Dialer	
	Nurse Call Station	Battery Operated WiFi device.
	Nurse Call Annunciator	
	Nurse Call Monitor	
	Ground	
	110 V power	

Device Location Orientation

- ☒ Above Counter
- ☒ Below Ceiling
- ☒ Ceiling
- ☒ Door
- ☒ Elevator
- ☒ Floor
- ☒ Ground
- ☒ Interface
- ☒ Millwork
- ☒ Pedestal
- ☒ Soffit
- ☒ Wall